



**RUTH STRAUSS**  
FOUNDATION



## Appointment of the Chair of the Board

2026

Saxton Bampfylde



## About the Ruth Strauss Foundation

The Ruth Strauss foundation was launched in Ruth's memory in 2019, to accomplish two aims:

- To provide specialist and accessible support for families where a parent has incurable cancer, so that parents feel confident and equipped to keep their children informed and involved.
- To advocate for and invest in non-smoking lung cancer research and awareness, collaborating with patient-led organisations, industry and healthcare professionals so that patient outcomes are improved.

You can read Ruth's story [here](#).

Over its first six years, the foundation has accomplished much, achieving a high public profile in support of public awareness of non-smoking lung cancers, and the need for supporting families when a parent is living with incurable cancer. It has established successful programmes in each of these spaces, proving concept, but also further highlighting the unmet need. It punches far above its weight in terms of visibility and awareness created for these two causes. At this inflection point

in its development, the Ruth Strauss Foundation seeks a new Chair to oversee and guide the charity as it seeks to further its support for families, and its contribution to ground-breaking research.

To date, the foundation has built considerable public awareness through major events, such as Red for Ruth, supported by the England & Wales Cricket Board and the Marylebone Cricket Club, as well as through events such as Rock for Ruth. In addition to raising much-needed funds for the foundation's cause, it has also highlighted these key areas of under-served social service and medical understanding.

This appointment brief should be read in conjunction with the foundation's website, which is available [here](#).

# The Role

## Chair of the Ruth Strauss Foundation

The foundation's new Chair will succeed Terry Grote OBE, as he reaches the conclusion of his term. They will arrive at a key inflection point for the foundation, as it embarks on its next phase of development. The organisation is maturing following its start-up phase, and has key questions to address around the strategy for its scope and impact; and in the development of a maturing organisational model. The Chair should also lead the replenishment of the board, with the founding members due to reach their maximum terms in the next two years.

## Governance

The board is composed of independent trustees, drawn from a range of sectors and background, with close personal connections to the mission, as well as to Ruth and Sir Andrew Strauss.

The board of trustees works closely with Sir Andrew, the Foundation's founder. The board also draws from high-level advisory groups, across family support; scientific research; governance, technology

and law; finance; and fundraising.

You can read the profiles of the board of trustees [here](#).

## Organisation

The Foundation has consistently fundraised £2.2m to £2.6m in each of the last four financial years, and has healthy reserves. It has 17 members of staff, including its CEO, Ines Thiru.





RUTH STRAUSS  
FOUNDATION



## RSF Portfolio Highlights

### Support for Families

RSF was established on the belief that all parents receiving an incurable cancer diagnosis should have access to specialist support and guidance to help them talk to their children and prepare them for what's to come. The free Family Support Service provides parents with the professional emotional support they need to start the difficult conversation with their children about their diagnosis.

RSF has established a network of care for families facing grief through a number of programmes to broaden support and training for other key communities supporting children and families. In 2022, it launched its healthcare professional training programme, and more recently its schools and workplace training. To support its schools programme, it produced a new Minecraft Education game, called Detect & Diagnose, for children and young people, which helps them to understand cancer, its detection and diagnosis, in an age-appropriate and engaging way.

### Research

RSF runs its own grants programme, awarding grants for research that focuses specifically on non-smoking lung cancer, an underserved patient group. The programme is designed to improve early diagnosis, patient experience, and outcomes by addressing gaps in public awareness, risk identification, psychological support, and patient information.



# Person Specification

## Candidate Profile

RSF seeks an accomplished Chair, capable to guiding a high-calibre organisation into its next phase of development. While the Chair's experience could have been gained in a range of sectors, there are key leadership attributes and personal qualities that they will demonstrate at an apex point in their career.

1. They should be an effective board Chair, experienced in good governance in a charity context.
2. They should be an impartial, independently-minded leader, capable of guiding the Foundation's board and executive through this phase of development, helping colleagues to sensitively weigh-up the opportunities as well as the risks in front of them.
3. They should be dedicated to the charitable mission of the Foundation, demonstrating a compassion and lightness of touch, while also working with clarity and determination to advance the impact of the charity.
4. Finally, they should bring a strong personal network, and the ability & willingness to use it in service of the foundation's work. This could involve fundraising from HNWIs, brokering opportunities for fundraising events or through strategic partnerships, or influencing policymakers and health sector leaders.

## Skills & Experience

- Experience as a Board Chair, with experience of the governance of a charity (as a Trustee or Chair).
- Experience of fundraising and ensuring long-term

financial stability.

- Experience of ensuring best-practice governance, including the recruitment of trustees.
- Experience serving as a public representative; an assured, compelling communicator.
- Experience of founder-led organisations could be beneficial.

## Personal Attributes

- A demonstrable interest in furthering the mission of RSF.
- Strategy-setting skills, including the ability to advise on the allocation of relatively constrained resources for maximum impact.
- Personal qualities of diplomacy, humility and emotional intelligence are essential.
- The ability to lead with integrity, and accountability; thoughtfully setting direction.
- A skilled networker, with an aptitude for partnership-building. Prepared to leverage their personal network in service of the mission of RSF.
- A mentor and guide to the executive team, focused on furthering the impact of the charity, and developing its organisational culture.





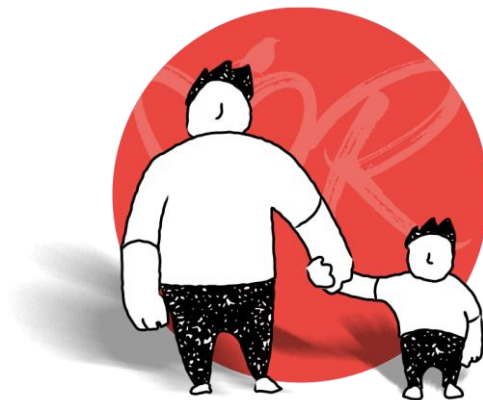
## Terms of Appointment

The board meets bi-monthly, alternating between face-to-face and virtual meetings. The Chair is expected to attend each meeting, and provide relevant input and guidance before and after the meeting. The Chair provides regular guidance and support as needed to the RSF CEO, as well as to fellow board members, and to the founder, when required.

### Particulars

The position is unremunerated, in line with Charity Commission rules, but all reasonable travel costs are reimbursed.

A time commitment of 3 days per month is anticipated, including preparation and ad hoc time outside of set board meetings.





## How to apply

**Saxton Bampfylde Ltd is acting as an employment agency advisor to Ruth Stauss Foundation on this appointment.**

Candidates should apply for this role through our website at [www.saxbam.com/appointments](http://www.saxbam.com/appointments) using code **NBYBA**

Click on the 'apply' button and follow the instructions to upload a CV and cover letter and complete the online equal opportunities monitoring\* form.

The closing date for applications is noon on **Monday 23 March**.

\* The equal opportunities monitoring online form will not be shared with anyone involved in assessing your application. Please complete as part of the application process.

### **GDPR personal data notice**

According to GDPR guidelines, we are only able to

process your Sensitive Personal Data (racial or ethnic origin, political opinions, religious or philosophical beliefs, trade union membership, genetic data, biometric data, health, sex life, or sexual orientation) with your express consent. You will be asked to complete a consent form when you apply and please do not include any Sensitive Personal Data within your CV (although this can be included in your covering letter if you wish to do so), remembering also not to include contact details for referees without their prior agreement.

### **Due diligence**

Due diligence will be carried out as part of the application process, which may include searches carried out via internet search engines and any public social media accounts.



RUTH STRAUSS  
FOUNDATION



Saxton Bampfylde